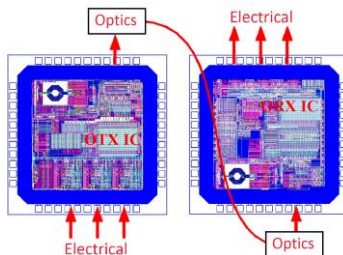
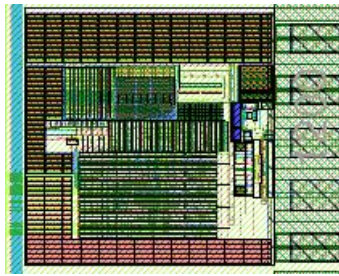
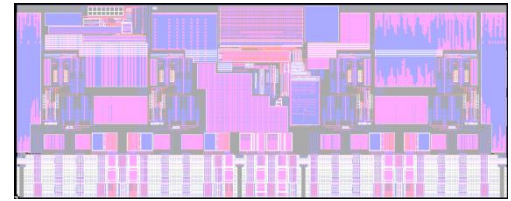
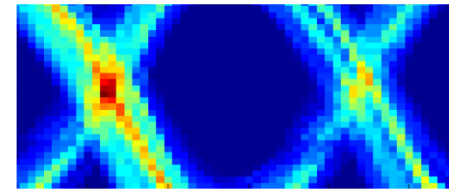
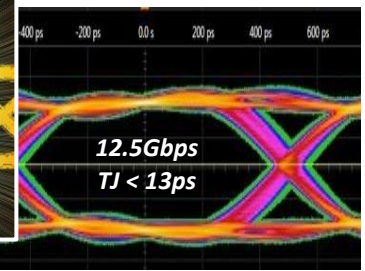


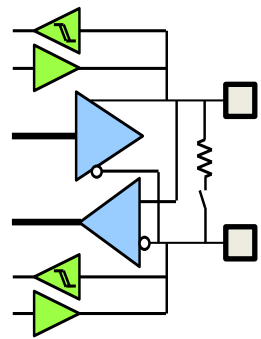
SERDES

- ✓ One CDR architecture proven from 180nm to 12nm and from <100Mbps to >25Gbps
- ✓ Wide range: over 10:1 data rate from one IP
- ✓ Integrated jitter below 0.7ps RMS from a crystal reference clock
- ✓ Custom, semi-custom and standards-based interfaces available including V-by-One HS, XAUI, SATA, JESD204B, OIF-CEI, PCIe, CPRI, SGMII, 10G-KR and Multiprotocol to 16Gbps



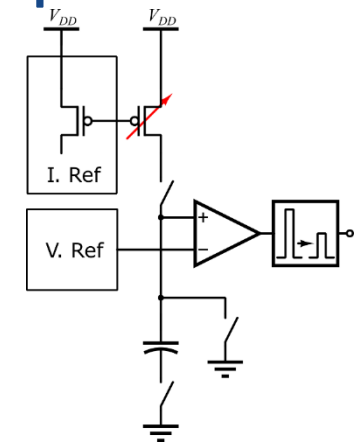
LVDS-BASED INTERFACES

- ✓ Custom, semi-custom and standards-based interfaces available including FPD Link, FastLVDS, OpenOLDI, CameraLink, Mini LVDS
- ✓ Robust and wide range: dynamic phase alignment and pixel clocks from <10MHz to >200MHz; line rates over 3Gbps



FREE RUNNING OSCILLATORS

- ✓ Power below 30μW possible
- ✓ Accuracy over PVT after trimming better than ±1.5% possible
- ✓ 5nm to 65nm



PROCESSES SUPPORTED

- ✓ Silicon Creations IP is TSMC IP 9000 qualified and is proven or in mass production in many processes
- ✓ Automotive/ISO26262 safety supported
- ✓ Our in-house PDKs and standard cells mean our IP does not require third party licenses and we can port our IP to new processes very quickly and with low risk



FinFet: 4nm, 5nm, 7nm, 8/10nm, 12/16nm;
 FDSOI: 22nm, 28nm;
 CMOS: 22/28nm, 40/45nm, 55/65nm, 90nm, 130nm, 180nm

CONTACT Us



- ✓ Website: www.siliconcr.com (look for more product details and customer testimonials)
- ✓ Phone/fax: +1 (678) 259-9301 / +1 (866) 232-3431
- ✓ Email: sales@siliconcr.com